

ENROLLMENT NUMBER:

STUDENT NAME:

Class **3**

Maximum Marks : 100
Duration : 40 Minutes
Total Questions : 30

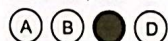
Test Paper Type

CC

iAIO ^{1st} INTERNATIONAL ARTIFICIAL INTELLIGENCE OLYMPIAD 2025-2026

Instructions for the Candidates

1. For filling up information about yourself on the OMR sheet, you will be given additional ten minutes before the start of the examination.
2. Write your 12-digit IAIO Enrollment Number and your name on top of the Question Paper in the given space.
3. Do not forget to sign the OMR sheet. Also, write your Roll No. on the Question Paper Booklet, and do not take this home.
4. The Question Paper Booklet consists of 30 questions, divided into two sections.
5. Section-A: Artificial Intelligence (25 questions); Section-B: Scholar's Zone (5 questions).
6. Each question of Section-A carries 3 marks, and that of the Scholar's Zone carries 5 marks.
7. All the questions are compulsory, and there is no negative marking.
8. Use of a calculator or any other devices in the examination is strictly prohibited.
9. Choose only ONE OPTION as an answer.
10. BLUE/BLACK ball pen is preferred to darken the circle; however, in case of non-availability, an HB pencil can be used. Mark your choice of answer in the OMR sheet by darkening a circle, as shown below.



Section-A (Artificial Intelligence)

1. Which action best shows a smart machine at work?
 - A. A music app suggesting songs you might like
 - B. A torch turning on when you press the switch
 - C. A timer ringing after you set 5 minutes
 - D. A pencil writing when you push harder

2. There's loud music at a birthday party. Your assistant keeps saying, "I didn't catch that." What's the BEST first step?
 - A. Go nearer and speak a little louder
 - B. Move to a quieter spot and speak clearly
 - C. Repeat the command faster and again
 - D. Tap the speaker and try once more

3. Which of the following is an example of artificial intelligence?
 - A. A microwave that heats food
 - B. A calculator that solves mathematics
 - C. A voice assistant like Alexa
 - D. A bicycle with a bell

4. Maya says, "It's okay to tell my best friend my computer password because we trust each other very much." What is the main problem with Maya's idea about sharing passwords?
 - A. Friends need your passwords
 - B. Passwords must stay secret
 - C. Teachers keep all passwords
 - D. Passwords never protect data

5. A device in the kitchen keeps track of milk and fruits and reminds you to buy more when they are low. Which device is MOST LIKELY using AI here?
 - A. Smart fridge
 - B. Juice blender
 - C. Gas stove
 - D. Microwave oven

6. When you want to tell your characters what to do in Scratch, how do you build the instructions for them?
 - A. You use a paintbrush tool to draw lines of code.
 - B. You connect colourful puzzle-like pieces of commands together.
 - C. You simply tap on the picture of your character on the screen.
 - D. You write down all your instructions using words in a special window.

7. The assistant says, "Tell me your home address to play a song." What should you do?
 - A. Share your address to get the song
 - B. Give a false address to move on
 - C. Type your address quietly to continue
 - D. Ask an adult and do not share details

8. After you watch cricket videos, a shopping app begins showing cricket kits. What did the app most likely use?
 - A. Today's weather report
 - B. Your viewing history
 - C. Your phone's contacts
 - D. A random guess

9. Robots and computers with Artificial Intelligence (AI) can do many smart things, but they are not alive like people or animals. Why can't a smart robot truly feel happy or sad in the same way a person can?
 - A. Because robots need to be charged with electricity and run out of battery.
 - B. Because robots are made of metal and wires, not a squishy brain like ours.
 - C. Because robots can only work when there's bright light around them.
 - D. Because robots doesn't have natural intelligence like ours.

-
10. What does it truly mean to respect someone's privacy, especially when you are using computers or the internet?
- A. To tell everyone all the private things you know about other people.
 - B. To write your friend's home address on a public website without asking them.
 - C. To make sure that private information is kept safe and not shared without permission.
 - D. To always be friendly and greet people you meet in online games.
-
11. What is a sprite in Scratch?
- A. A special character or object that you can give commands to.
 - B. One of the colourful puzzle pieces that you use to write your code.
 - C. A little music or sound effect that your game can play.
 - D. The big picture at the very back of your game screen.
-
12. What is the most important idea behind being a good AI citizen?
- A. Using technology kindly and fairly
 - B. Sharing passwords with friends
 - C. Playing online games longer
 - D. Posting every photo online
-
13. Which sentence BEST shows how AI helps in games and entertainment?
- A. It makes screens brighter
 - B. It adjusts to your style
 - C. It updates the console
 - D. It removes all rules
-
14. Your sprite spins too fast in a loop and looks messy. What is the best first step to slow it down?
- A. Add more turn blocks
 - B. Increase the project volume
 - C. Change the costume to a slower one
 - D. Add a short wait block inside the loop
-
15. Which AI assistant by Google is used on Android and Google Home?
- A. Siri
 - B. Alexa
 - C. Bixby
 - D. Gemini
-
16. Which is the correct order of how smart machines work?
- A. Think → Act → Sense
 - B. Sense → Think → Act
 - C. Act → Sense → Think
 - D. Sense → Act → Think
-
17. Lalit says, "When I am on the internet, there are no real rules, so I can do whatever I want." What is the biggest mistake in Lalit's thinking about being online?
- A. Online rules help keep everyone safe and kind.
 - B. Rules are only for smart computers or robots.
 - C. Rules stop all fun and learning on the internet.
 - D. Rules are only for teachers and are kept secret.

18. Clues:

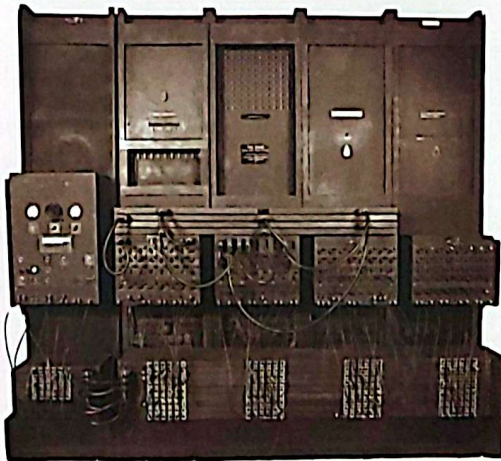
(i) Sold to businesses (ii) stored data on magnetic tape (iii) used for office work

Which machine fits the clues?

A. Abacus



B. ENIAC



C. UNIVAC



D. IBM PC



19. Which of these is an example of natural intelligence?

- A. A person solving a puzzle
- B. A robot cleaning the floor
- C. A voice assistant replying
- D. A smart light turning on

20. Complete the clever saying:

If a calculator uses numbers to solve sums,
Then an Artificial Intelligence (AI) system uses _____ to get better and smarter at its jobs.

- A. learning from lots of information it sees
- B. reading instructions written in books
- C. people pushing its many buttons
- D. making its screen look brighter or darker

21. How does AI understand many languages?

- A. By reading books
- B. By watching movies
- C. By learning from data
- D. By travelling the world

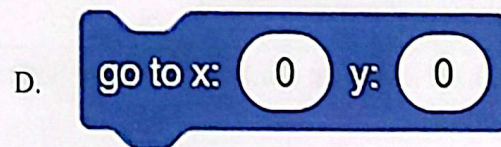
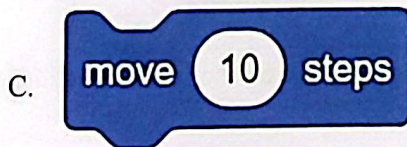
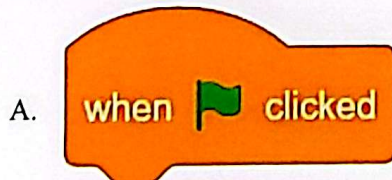
22. A pop-up says, "Win a prize—click quickly!" What is the safest step?

- A. Ask a trusted adult first
- B. Click it and enter details
- C. Share it with classmates
- D. Save the link for later

23. Your tablet or phone shows a message suggesting a brand new learning game or app. Even though it looks fun, what is the smartest and safest thing to do before you put it on your device?

- A. Just press the button to get it right away, without checking anything.
- B. Show it to a grown-up you trust and ask them to help you check if it's safe.
- C. Tell your friend your secret password so they can try to get the app for you.
- D. Don't worry about any warnings; just get it on your tablet as quickly as you can.

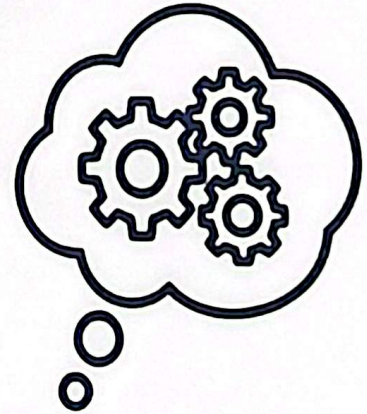
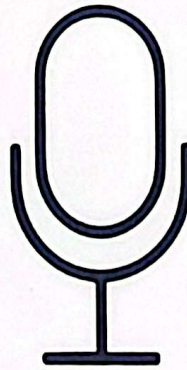
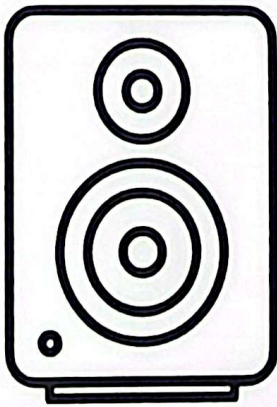
24. Which block starts a script when you run a project?



25. Thinking about smart computer brains (Artificial Intelligence), which of these tools that you might use at school could be using AI to help you learn or make things easier?

- A. A smart board that can understand what you write on it.
- B. A learning app on a tablet that gives you harder questions when you get things right.
- C. Only the smart board.
- D. Both the smart board AND the learning app.

26. Amit thinks, "If I say 'please' before I ask the smart speaker to play a song, it will always understand my words perfectly." What is the mistake in Amit's thinking about how smart speakers work?
- The speaker only understands when you say "please" really loudly, not just politely.
 - Saying "please" is a special magic word that makes the speaker connect to the internet.
 - Smart speakers only listen well during the daytime, not during the night.
 - The speaker needs your words to be said clearly and correctly, not just politely, to understand.
-
27. Your teacher asks you to count 48 apples quickly using only simple methods. What is the smartest and quickest way to count all the apples without making a mistake?
- Count each apple one by one, without writing anything down
 - Make tally marks in groups of five, then total the rest
 - Draw the apples as pictures and count the drawings at the end
 - Keep the count in your head while you go, without notes
-
28. Which order shows how a voice command works?



- Microphone → Think → Speaker
 - Speaker → Microphone → Think
 - Think → Speaker → Microphone
 - Microphone → Speaker → Think
-
29. Imagine you have a little cat character (sprite) in Scratch. When you click the green flag, two sets of instructions start at the same time:
- First instruction set: "repeat 2 times { move 20 steps }"
- Second instruction set: "repeat 4 times { turn right 90 degrees }"
- When both sets of instructions have finished, which way will your cat character be looking?
- It will be looking the exact same way it started.
 - It will be looking in the complete opposite direction it started.
 - It will be looking straight down.
 - It will be looking straight up.

30. Three friends are using different smart helpers at home.

- *Arjun's smart helper looked inside and suggested a shopping list.*
- *Bela's device answered questions and played songs.*
- *Charu's device cleaned the floor while avoiding toys.*

Which pairing is correct?

- A. Arjun → Smart speaker, Bela → Robot vacuum, Charu → Smart fridge
- B. Arjun → Smart speaker, Bela → Smart fridge, Charu → Robot vacuum
- C. Arjun → Robot vacuum, Bela → Smart fridge, Charu → Smart speaker
- D. Arjun → Smart fridge, Bela → Smart speaker, Charu → Robot vacuum

